

KITTITAS COUNTY COMMUNITY DEVELOPMENT SERVICES

411 N. Ruby St., Suite 2, Ellensburg, WA 98926

cds@co.kittitas.wa.us

Office (509) 962-7506

Fax (509) 962-7682

"Building Partnerships – Building Communities"

NOTICE OF APPLICATION

(Pursuant to Kittitas County Code 15A.03.060)

To: Interested Departments & Agencies with Jurisdiction
Adjacent property owners
Applicant

From: **Jeff Watson, Staff Planner**

Date: 7/16/2009

Subject: **Feeser Setback Variance, VA-09-00011**

On May 27, 2009, CJ Lindquist, submitted a Setback Variance application which was deemed complete on July 2, 2009 by Kittitas County Community Development Services staff. The application is for a Setback Variance pursuant to Kittitas County Code 17.84 on approximately .67 acres of land that is zoned Rural 3. The subject property is located west of the City of Cle Elum, north of Interstate 90, west of Wapiti Drive, and east of Beaver Lane, in a portion of Section 22, T20N, R14E, WM in Kittitas County, bearing Assessor's map number 20-14-22050-0109. See attached vicinity map. No other permits are associated with this application.

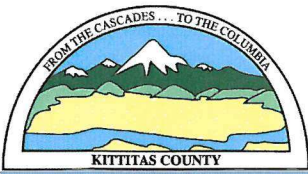
The complete submitted application and related filed documents may be examined by the public at the Community Development Services office at 411 N Ruby Street, Suite 2, Ellensburg, WA 98926, as well as on the Community Development Services website at www.co.kittitas.wa.us/cds/current/. If you do not have internet access, or are unable to view the complete application at Community Development Services in person, one will be mailed on request.

Under Title 15A.03.080, Setback Variances are processed in an abbreviated administrative format, which does not involve a public hearing. All comments will be considered in the decision making process, and any person has the right to comment on this application and receive notification of the Community Development Services administrative decision, once made. Appeals to an administrative land use decision may be filed within 10 working days with the board of county commissioners as outline in Chapter 15A.07 of the Kittitas County Code. The current appeal fee is \$500⁰⁰.

All comments on this application must be addressed to the designated permit coordinator at :

Attn: **Jeff Watson**
Kittitas County Community Development Services
411 N Ruby Street, Suite 2
Ellensburg, WA 98926

SEE REVERSE SIDE FOR ADDITIONAL INFORMATION



KITTITAS COUNTY COMMUNITY DEVELOPMENT SERVICES

411 N. Ruby St., Suite 2, Ellensburg, WA 98926

cds@co.kittitas.wa.us

Office (509) 962-7506

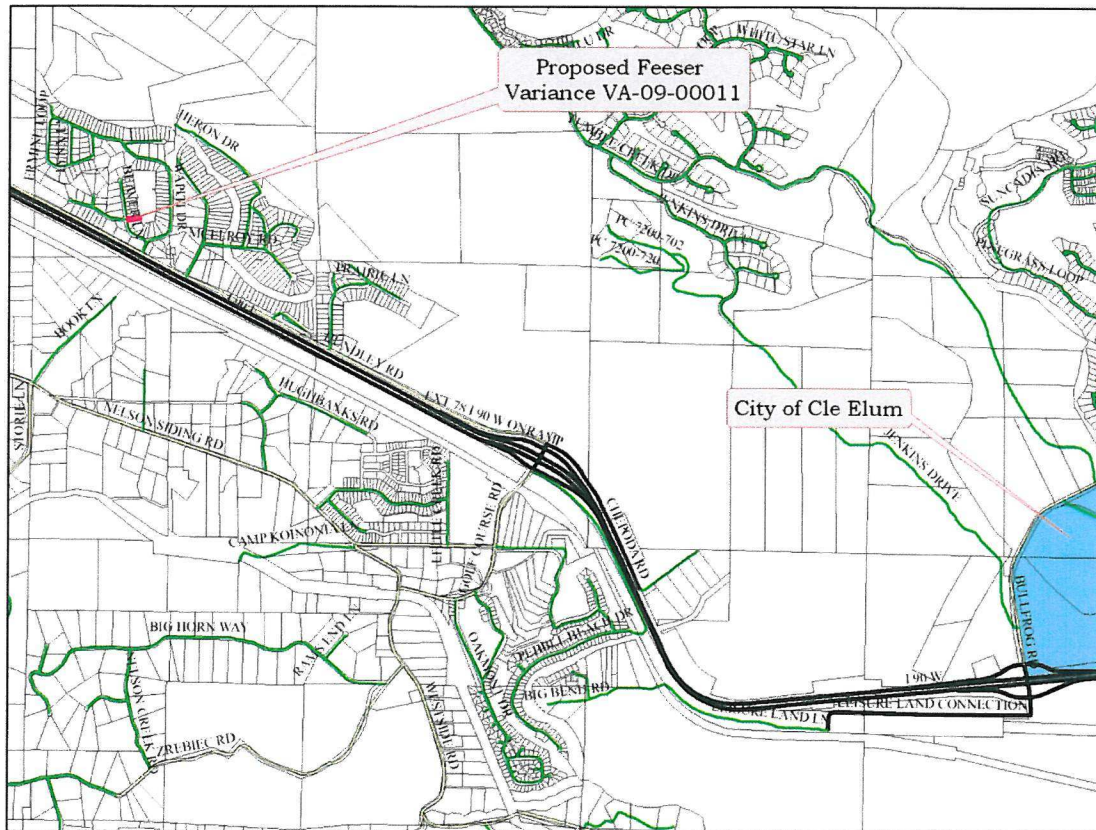
Fax (509) 962-7682

"Building Partnerships – Building Communities"

The 15 day comment period as outlined in Table A at the end of Title 15A of the Kittitas County Code, will terminate on **Wednesday, August 5th, 2009 at 5:00 pm.**

If you have any questions regarding the proposed project outlined above, or the application process, please contact Community Development Services at (509) 962-7506.

Vicinity Map



SEE REVERSE SIDE FOR ADDITIONAL INFORMATION